



### MARINA oval bowl set (NCS)

This combination does not appear in any of the catalogues. The oval shaped float bowl is named Pauline in the 1935 catalogue. Float bowls are 31.3cm (12¼") long by 21cm (8¼") wide.

Seen in Oralit braun (brown cloud glass) as well as Oralit malachit (green cloud glass) in a frosted finish. A set has been seen in blue and possibly other colours, in a frosted finish.

**Extremely rare.**

Abb. 2014-2/08-01

Tafelaufsatz „Marina“, MB Walther 1935, Tafel 157, Figur mit Blumenblock Nr. 36207, H 19 cm, grün, rosé, blau  
Schale „Pauline“, MB Walther 1935, Tafel 155, Nr. 45860, B 32 x 21 cm, goldgelb, rosé, topas (beide in den MBs nicht als „Oralit“)

SG

Mai 2014

## Cooper, Pressed Glass Figural Flower Float Bowl Sets, Collector's Guide, 2014

Neil Cooper

Pressed Glass Figural Flower Float Bowl Sets

and Flower Frogs, Collector's Guide, 2014

123 Seiten, über 200 farbige Abbildungen

Auflage 500 Exemplare, DIN A5

Verkauf über eBay, Art.Nr. 141259955314

AU \$ 39,95, Porto AU \$ 17,00

€27,15 + 11,55

MAIL [gfbsets@gmail.com](mailto:gfbsets@gmail.com)

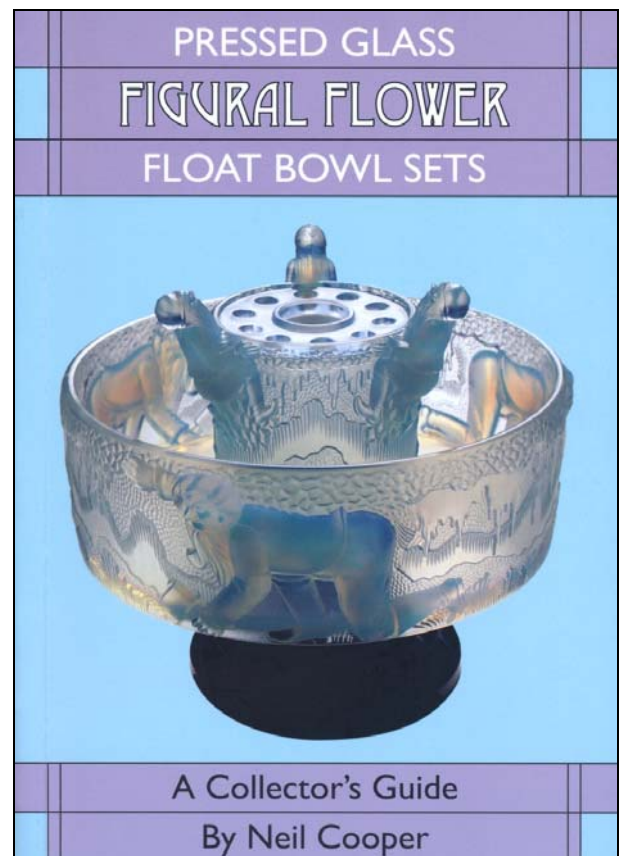
Abb. 2014-2/08-02

Cooper, Pressed Glass Figural Flower Float Bowl Sets ...

Collector's Guide, 2014, Einband

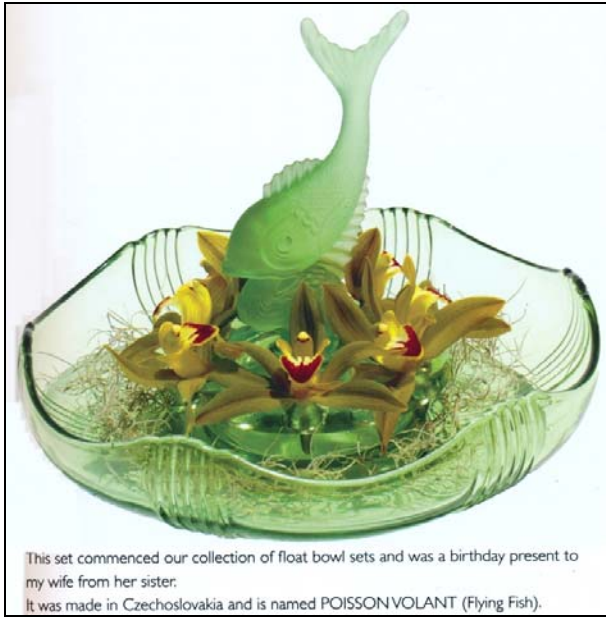
eBay Art.Nr. 141259955314, € 27,15 + 11,55

Neil Cooper hat mich vor einiger Zeit darum gebeten, dass er die von der PK publizierte Musterbücher zur Bestimmung der Gläser verwenden kann. Seitdem hat er Gläser der Sammlung von seiner Frau und ihm sowie von anderen Sammlern in einem **sehr interessanten Büchlein** zusammen getragen. Die beiden Sammler leben in **Australien** und sammeln dort und wohl auch im Internet. Es ist ganz erstaunlich, wie viele Gläser deutsche Pressgläser von **Brockwitz** und **Walther** aus den 1930-er Jahren bis nach Australien gekommen sind! Es ist das erste Buch zum Thema seit **Bonnie Bull, Flower Frogs for Collectors, Schiffer Books, Atglen, PA**, herausgebracht **2001**, vorgestellt in **PK 2002-3**.



Seit **2002** konnten von der PK vor allem viele Musterbücher von deutschen und tschechischen Herstellern der Zeit zwischen den beiden Weltkriegen dokumentiert werden. Musterbücher über wichtige Hersteller in den **USA** und **England** fehlen in der PK aber vollständig. Das Buch von Cooper ist deshalb **besonders nützlich**, weil es ihm gelungen ist, aus diesem Bereich viele interessante Gläser zu finden und deren Hersteller zu bestimmen, u.a. von **Cambridge, Imperial, Fenton, Heisey** bzw. **Bagley, Jobling und Sowerby**. Aus der Tschechoslowakei **Inwald, Libochovice, Reich** ...

Abb. 2014-2/08-03, Cooper, Figural Flower Bowl Sets, 2014 S. 2, Inwald



**Neil Cooper:** Dear Siegmars,

I am pleased that you like my book and thank you for taking the time to write to me. [...] Thank you for the information that you sent me. I have catalogues that I purchased from you several years ago and I have visited your **PK site** many times to obtain confirmation about various Bowl Sets.

At all times during the research and writing stages of my book I wanted to make sure that the **information contained within it was true and accurate** as well as being historically correct. As you would have seen in my book there are several Bowl Sets that I was **unable to confirm who the makers** were as I do not have the necessary catalogues.

**I am hoping that when people read my book they may be able to provide me with further information to fill in these gaps.**

Regarding the mentioning of the **Koala figurine**, in my opinion it has been **wrongly named**. I believe that the figurine depicts **Bear Cubs** climbing a tree stump and was made by August **Walther & Söhne** even though I haven't seen it in any of their catalogues. [...] The **Koala** is native to **Australia** and it isn't even a bear it is a Marsupial mammal that is related to the Kangaroo and Wombat. See pictures below of **Koalas** and **Bear Cubs**

side by side to show how different these two animals are in appearance.



[SG: of course you are right ... but it is too much work to update all articles with the word "koala" ... it was repaired with "koala bear" ... **PK 2012-1**]

I am very much aware that the figural flower bowls are seen in **different shaped and patterned bowls of the same maker**. I was unable to include all of these variations in my book because there are too many. The mixing and matching of Figural Flower Frogs and Bowls by the same maker is acceptable. It may have been possible that the customer when purchasing a Bowl Set was **allowed to select** which figural flower frog and bowl they wanted together to make up a set. This may be the reason why we see the same figural flower frog in different Bowls of the same maker.

Whenever I see a Bowl Set being sold on eBay and described as being made by **Schweig, Müller & Company**, I immediately query it and seek proof from the sellers by asking them, do they have catalogues or can they point me in the direction of catalogues to confirm that the bowl set is actually made by that company. Only to be informed that they acquired this information from another eBay seller, hence a myth is born and history unfortunately becomes blurred or is even rewritten. Further enquiries by me have been fruitless, so I am still waiting on information to confirm if any Bowl Sets were ever made by Schweig, Müller & Company.

Sincerely yours, Neil

Abb. 2014-2/08-04, Cooper, Figural Flower Bowl Sets, 2014 S. 4, MB Walther 1936, Möven, Tafel 1, Nr. 40081 Schale, Tafel 1, Nr. 40032



Abb. 2014-2/08-05, Cooper, Figural Flower Bowl Sets, 2014 S. 78, Hersteller unbekannt, Tschechoslowakei?, um 1935?

**PENGUIN bowl set**

They were thought to have been made in the 1930's in two pieces. Figural flower frogs are 19cm (7½) high in one piece. Float bowls are 32.5cm (12¾) in diameter.

The word Czechoslovakia is moulded on both pieces.

Seen in crystal in a clear and frosted finish.





Abb. 2014-2/08-06, Cooper, Figural Flower Bowl Sets, 2014 S. 79, Hersteller unbekannt, Tschechoslowakei?, um 1935?



**FROG bowl set**

They are thought to have been made in the 1930's but this is yet to be confirmed. Figural flower frogs are 18.5cm (7¼) high in one piece. Float bowls are 28 cm (11") in diameter with a cabbage leaf pattern.

Seen in crystal in a clear and frosted finish.

**Extremely rare.**

Seen with a DIAMOND CRYSTAL BOHEMIA label attached to the flower frog. These flower frogs will also fit into the crystal Penguin float bowls.

Abb. 2014-2/08-07, Cooper, Figural Flower Bowl Sets, 2014 S. 50, Bagley



**ANDROMEDA EQUINOX bowl set**

They were first made in the 1950's. An Andromeda figural flower frog has been combined with the Equinox float bowl as seen in the 1953 Bagley's catalogue. Equinox bowls are 29.5cm (11¾) in diameter and have a rolled rim with a square base.

Seen in amber, green, blue, and pink in a clear and frosted finish.

**Very rare.**


Abb. 2014-2/08-08, Cooper, Figural Flower Bowl Sets, 2014 S. 16, Cambridge



**TWO KIDS bowl set**

A Two Kids figural flower frog has been combined with a Cambridge float bowl with a rolled rim decorated with an applied gilt floral decoration.

Abb. 2014-2/08-09, Cooper, Figural Flower Bowl Sets, 2014 S. 40, Heisey




**KINGFISHER bowl set**

Kingfisher figural flower frog has been combined with a Heisey twist design float bowl.

**Very rare.**

Abb. 2014-2/08-10, Cooper, Figural Flower Bowl Sets, 2014 S. 65, Inwald



**JOSEF INWALD**

**DANCING LADY bowl set with a wave pattern bowl**

They were first made in the 1930's in three pieces. Figural flower frogs are 23cm (9") high in two pieces. Float bowls are 29cm (11¾) in diameter with a wave pattern.

Seen in crystal, amber, green, blue, pink and amethyst in a clear and frosted finish.



Abb. 2014-2/08-11, Cooper, Figural Flower Bowl Sets, 2014 S. 103, Schale MB Walther 1935, Tafel 158, Nr. 35032, Neptun Figur Bären / Koala, s. PK 2012-1 und PK 2012-2

**BEAR CUPS<sup>AN</sup> bowl set**

Figural flower frogs are 18cm (7") high in two pieces. Float bowls are 28cm (11") in diameter.

Float bowls are seen in the 1935 catalogue and are named Neptune. These three piece sets have not been seen in any of the catalogues.

Seen in crystal, amber, green, blue, pink in a clear and frosted finish.

**Extremely rare.**



Abb. 2014-2/08-12, Cooper, Figural Flower Bowl Sets, 2014 S. 108, MB Brockwitz 1936 Farbtafeln, Figur Tafel 15, Nr. 491, H 21,5 cm Schale Tafel 20, Nr. 6918, D 35 cm s. [www.glas-musterbuch.de](http://www.glas-musterbuch.de) ... Brockwitz 1936 Farbtafeln

**KAKADU bowl set**

In the 1936 catalogue these two piece sets are listed as Kakadu (cockatoo) with the number 491. Figural flower frogs are 21.5cm (8½") high in one piece. Float bowls are 34.5cm (13½") in diameter.

Seen in crystal, amber, green, blue, pink in a clear and frosted finish.

**Extremely rare.**




Abb. 2014-2/08-13, Cooper, Figural Flower Bowl Sets, 2014, S. 113, Schweig, Müller & Co. (SG?)

**ICE CAVE<sup>AN</sup> bowl set**

These three piece sets are thought to have been made in the 1930's. Central figural flower pots with flower rings are 12cm (4¾") high, with three climbing figurines on the rim. Float bowls are 25cm (9¾") in diameter with three evenly spaced figurines with axes crawling around the perimeter.

Seen in crystal, amber, green, blue, pink and opalescent in a frosted finish.

**Extremely rare.**




Siehe unter anderem auch:

- PK 2002-3 SG, Tafelaufsätze von August Walther & Söhne AG, Ottendorf-Okrilla, 1934-1936  
 PK 2002-3 SG, Tafelaufsätze von August Walther & Söhne AG, James A. Jobling und anderen  
 PK 2002-4 SG, Tafelaufsätze von August Walther & Söhne AG, Ottendorf-Okrilla, 1934-1936  
 PK 2003-2 Mauerhoff, Tafelaufsätze von August Walther & Söhne AG, Ottendorf-Okrilla von 1932 bis 1939 und von 1945 bis 1968. Der Entwerfer Fritz Scheiner  
 PK 2004-3 Stopfer, Der Blumenblock zur Figur „Arabella“ von Walther bzw. Sachsglas
- 
- PK 2001-3 Anhang 01, SG, Spaeth, MB Sächs. Glasfabrik August Walther & Söhne 1934 (Auszug)  
 PK 2002-3 Anhang 01, SG, Mauerhoff, MB Sächs. Glasfabrik August Walther & Söhne 1935 (Auszug)  
 PK 2002-3 Anhang 02, SG, Mauerhoff, MB Sächs. Glasfabrik August Walther & Söhne 1936 (Auszug)
- 
- PK 2003-1 Conway, Ein Brief mit 2 Büchern über Pressglas in Australien  
 PK 2003-1 Arnold, Pressglas der Crown Crystal Glass Co. Ltd. in Australien  
 PK 2003-3 Conway, Gepresstes Glas aus den Dreißiger Jahren und nach 1945  
 PK 2003-3 Bannister, Crown Crystal Glass, Australien, reproduzierte in den 1930-er Jahren Pressgläser von Walther  
 PK 2003-4 Bannister, Pressglas von Crown Crystal, Australien, nach Mustern von August Walther & Söhne um 1935  
 PK 2004-2 Blomfield, SG, A Rather Mysterious Walther „Arabella“ Centre-piece in Australia  
 PK 2005-4 Bannister, Eine neue Website zu Pressglas: The Crown Crystal Glass Company Ltd  
 PK 2005-4 Haberland-Noce, SG, Green Glass Koala Frog & Insert, Hersteller unbekannt, Australien, um 1935  
 PK 2006-4 Haberland-Noce, SG, Uranium Koala Bear Float Bowl, Crown Crystal Glass Co. Ltd.?, ca. 1935  
 PK 2007-1 Bannister, Uranium Koala Bear Float Bowl, Crown Crystal Glass Co. Ltd.?, ca. 1935 (nicht Crown Crystal Glass!)  
 PK 2012-1 Michl, SG, Schale „Pelikan“ mit Blumenblock „Koala-Bären“, Walther, 1934-1939, der Blumenblock „Koala-Bären“ ist nicht aus Australien, sondern von Walther!  
 PK 2012-2 Boschet, SG, Bernstein-farbener Blumenblock „Koala-Bären“, Walther, 1934-1939

Siehe unter anderem auch WEB PK - in allen Web-Artikeln gibt es umfangreiche Hinweise auf weitere Artikel zum Thema - suchen auf [www.pressglas-korrespondenz.de](http://www.pressglas-korrespondenz.de) mit GOOGLE Lokal →

- [www.pressglas-korrespondenz.de/aktuelles/pdf/walther-tafelaufsaeetze.pdf](http://www.pressglas-korrespondenz.de/aktuelles/pdf/walther-tafelaufsaeetze.pdf) ..... PK 2002-3 (Jobling ...)  
[www.pressglas-korrespondenz.de/aktuelles/pdf/pk-2002-3w-walther-tafelaufsaeetze-1934-1936.pdf](http://www.pressglas-korrespondenz.de/aktuelles/pdf/pk-2002-3w-walther-tafelaufsaeetze-1934-1936.pdf)  
[www.pressglas-korrespondenz.de/aktuelles/pdf/pk-2002-3w-bull-flower-frogs.pdf](http://www.pressglas-korrespondenz.de/aktuelles/pdf/pk-2002-3w-bull-flower-frogs.pdf)  
[www.pressglas-korrespondenz.de/aktuelles/pdf/conway-glass-australia.pdf](http://www.pressglas-korrespondenz.de/aktuelles/pdf/conway-glass-australia.pdf) ..... PK 2003-1  
[www.pressglas-korrespondenz.de/aktuelles/pdf/conway-pressglas-1930.pdf](http://www.pressglas-korrespondenz.de/aktuelles/pdf/conway-pressglas-1930.pdf) ..... PK 2003-3  
[www.pressglas-korrespondenz.de/aktuelles/pdf/mauerhoff-tafelaufsaeetze-walther.pdf](http://www.pressglas-korrespondenz.de/aktuelles/pdf/mauerhoff-tafelaufsaeetze-walther.pdf) ..... PK 2003-2  
[www.pressglas-korrespondenz.de/aktuelles/pdf/bannister-pressglas-walther-crown-crystal.pdf](http://www.pressglas-korrespondenz.de/aktuelles/pdf/bannister-pressglas-walther-crown-crystal.pdf) PK 2003-3  
[www.pressglas-korrespondenz.de/aktuelles/pdf/bannister-pressglas-walther-crown-crystal-2.pdf](http://www.pressglas-korrespondenz.de/aktuelles/pdf/bannister-pressglas-walther-crown-crystal-2.pdf) PK 2003-4  
[www.pressglas-korrespondenz.de/aktuelles/pdf/pk-2004-2w-blomfield-walther-arabella.pdf](http://www.pressglas-korrespondenz.de/aktuelles/pdf/pk-2004-2w-blomfield-walther-arabella.pdf)  
[www.pressglas-korrespondenz.de/aktuelles/pdf/pk-2004-3w-heinemann-sg-schale-figures.pdf](http://www.pressglas-korrespondenz.de/aktuelles/pdf/pk-2004-3w-heinemann-sg-schale-figures.pdf)  
[www.pressglas-korrespondenz.de/aktuelles/pdf/pk-2004-3w-sg-walther-peter-pan.pdf](http://www.pressglas-korrespondenz.de/aktuelles/pdf/pk-2004-3w-sg-walther-peter-pan.pdf)  
[www.pressglas-korrespondenz.de/aktuelles/pdf/pk-2004-3w-stopfer-walther-blumenblock.pdf](http://www.pressglas-korrespondenz.de/aktuelles/pdf/pk-2004-3w-stopfer-walther-blumenblock.pdf)  
[www.pressglas-korrespondenz.de/aktuelles/pdf/pk-2005-1w-blomfield-brockwitz-vase-kakadu.pdf](http://www.pressglas-korrespondenz.de/aktuelles/pdf/pk-2005-1w-blomfield-brockwitz-vase-kakadu.pdf)  
[www.pressglas-korrespondenz.de/aktuelles/pdf/pk-2005-1w-blomfield-schale-weinglas-stern.pdf](http://www.pressglas-korrespondenz.de/aktuelles/pdf/pk-2005-1w-blomfield-schale-weinglas-stern.pdf)  
[www.pressglas-korrespondenz.de/aktuelles/pdf/pk-2005-1w-blomfield-aufsatz-cherubs.pdf](http://www.pressglas-korrespondenz.de/aktuelles/pdf/pk-2005-1w-blomfield-aufsatz-cherubs.pdf)  
[www.pressglas-korrespondenz.de/aktuelles/pdf/pk-2005-4w-bannister-crown-crystal-glass.pdf](http://www.pressglas-korrespondenz.de/aktuelles/pdf/pk-2005-4w-bannister-crown-crystal-glass.pdf)  
[www.pressglas-korrespondenz.de/aktuelles/pdf/pk-2005-4w-haberland-koala-baer.pdf](http://www.pressglas-korrespondenz.de/aktuelles/pdf/pk-2005-4w-haberland-koala-baer.pdf)  
[www.pressglas-korrespondenz.de/aktuelles/pdf/pk-2006-1w-blomfield-schale-berlin-marken.pdf](http://www.pressglas-korrespondenz.de/aktuelles/pdf/pk-2006-1w-blomfield-schale-berlin-marken.pdf)  
[www.pressglas-korrespondenz.de/aktuelles/pdf/pk-2006-3w-weihs-dose-kakadu.pdf](http://www.pressglas-korrespondenz.de/aktuelles/pdf/pk-2006-3w-weihs-dose-kakadu.pdf)  
[www.pressglas-korrespondenz.de/aktuelles/pdf/pk-2006-4w-blomfield-schale-rosen.pdf](http://www.pressglas-korrespondenz.de/aktuelles/pdf/pk-2006-4w-blomfield-schale-rosen.pdf)  
[www.pressglas-korrespondenz.de/aktuelles/pdf/pk-2006-4w-haberland-koala.pdf](http://www.pressglas-korrespondenz.de/aktuelles/pdf/pk-2006-4w-haberland-koala.pdf)  
[www.pressglas-korrespondenz.de/aktuelles/pdf/pk-2007-1w-bannister-koala.pdf](http://www.pressglas-korrespondenz.de/aktuelles/pdf/pk-2007-1w-bannister-koala.pdf)  
[www.pressglas-korrespondenz.de/aktuelles/pdf/pk-2007-2w-blomfield-schale-paradiesvogel.pdf](http://www.pressglas-korrespondenz.de/aktuelles/pdf/pk-2007-2w-blomfield-schale-paradiesvogel.pdf)  
[www.pressglas-korrespondenz.de/aktuelles/pdf/pk-2007-3w-bannister-angus-coote.pdf](http://www.pressglas-korrespondenz.de/aktuelles/pdf/pk-2007-3w-bannister-angus-coote.pdf)  
[www.pressglas-korrespondenz.de/aktuelles/pdf/pk-2011-4w-blomfield-schalen-voegel.pdf](http://www.pressglas-korrespondenz.de/aktuelles/pdf/pk-2011-4w-blomfield-schalen-voegel.pdf)  
[www.pressglas-korrespondenz.de/aktuelles/pdf/pk-2012-1w-michl-walther-schale-koala.pdf](http://www.pressglas-korrespondenz.de/aktuelles/pdf/pk-2012-1w-michl-walther-schale-koala.pdf)  
[www.pressglas-korrespondenz.de/aktuelles/pdf/pk-2012-2w-boschet-walther-blumenblock-koala.pdf](http://www.pressglas-korrespondenz.de/aktuelles/pdf/pk-2012-2w-boschet-walther-blumenblock-koala.pdf)  
[www.pressglas-korrespondenz.de/aktuelles/pdf/pk-2013-1w-gerlach-walther-segelschiff.pdf](http://www.pressglas-korrespondenz.de/aktuelles/pdf/pk-2013-1w-gerlach-walther-segelschiff.pdf)  
[www.pressglas-korrespondenz.de/aktuelles/pdf/pk-2014-2w-cooper-figural-flower-bowls-2014.pdf](http://www.pressglas-korrespondenz.de/aktuelles/pdf/pk-2014-2w-cooper-figural-flower-bowls-2014.pdf)

