



Abb. 2014-3/78-01
 Flugzeug als Lampenschirm, form-geblasenes, mattiertes Glas, Metallteile verchromt,
 L 34 cm, B vorne 34 cm, hinten 15 cm, H vorne 21 cm, hinten 13 cm
 Sammlung Menay
 Hersteller unbekannt, Deutschland, 1930-er Jahre? / **nicht Deutschland, USA 1938!!!**

Gerhard Menay, [Michael Szybalski](#), SG

November 2014

Flugzeug als form-geblasener Lampenschirm, Deutschland?, 1930-er Jahre? **nicht Deutschland, Hersteller unbekannt, USA 1938!!!**

Hallo Herr Geiselberger,

anbei mehrere Bilder einer Lampe in der Form eines Flugzeuges. Der Flugzeugkörper ist aus Glas und die anderen Teile sind aus Metall.

Die Maße: Länge 34 cm, Breite vorne 34 cm, hinten 15 cm, Höhe vorne 21 cm, hinten 13 cm.

Mit freundlichen Grüßen, Gerhard Menay

SG: Vom Stil vor allem der Metallteile würde ich die Herstellung in den **1930-er Jahren in Deutschland** vermuten. Wenn man sich bei Flugzeugen besser auskennt, könnte man einen bestimmten Typ des Flugzeugs feststellen und damit die Datierung sichern. Am ähnlichsten wäre die **Junkers Ju 52**, gebaut ab **1932** ... und am populärsten war sie auch - bis heute „Tante Ju“:
http://de.wikipedia.org/wiki/Junkers_Ju_52/3m



Wikipedia DE: Kurz nach dem Erstflug übernahm die „**Deutsche Luft Hansa AG**“ im Mai **1932** die erste **Junkers Ju 52/3m**. Im Juli nahm diese Maschine in Zürich an einem internationalen Verkehrsflugzeugtreffen teil, wo sie sich gegen Konkurrenten wie die **Dornier Do K** und **Fokker F.XII** durchsetzte. [...] außerordentliche Zuverlässigkeit [...] Die Lufthansa wählte deshalb die Junkers Ju 52/3m zu ihrem **Standard-Flugzeugtyp** und bestellte bereits im 4. Quartal **1932** die ersten **11 Flugzeuge**. **1938** wurden etwa **75 %** des gesamten Luftverkehrs mit der Ju 52/3m ausgeführt. Mit Berlin-Tempelhof als Zentrum wurde ganz Europa bedient. [...] Zahlreiche europäische Fluggesellschaften setzten die Ju 52 ein.

Abb. 2014-3/78-02
 Flugzeug als Lampenschirm, form-geblasenes, mattiertes Glas,
 Metallteile verchromt,
 L 34 cm, B vorne 34 cm, hinten 15 cm, H vorne 21 cm, hinten
 13 cm
 Sammlung Menay
 Hersteller unbekannt, Deutschland, 1930-er Jahre? /
nicht Deutschland, USA 1938!!!



Michael Szybalski

November 2014

Sehr geehrter Hr. Geiselberger,
 wieder einmal bin ich bei meiner Spyingen-Recherche auf Ihre Seite gestoßen und hoffe mich dieses Mal revanchieren zu können.

Sie berichten in der Ausgabe **2014-3** über ein „**Flugzeug als form-geblasener Lampenschirm, Deutschland?, 1930-er Jahre**“. Ich weiß nicht, ob dieses Thema schon geklärt ist, falls nicht, hier einige Angaben: Es handelt sich **nicht um ein in Deutschland hergestelltes Teil, es kommt aus den USA**, ich habe einige Informationen aus dem Internet für Sie als Anhang beigefügt, übrigens wurde dieses Model in den **1970-er / 1980-er** Jahren von **Sarsaparilla** (USA) neu aufgelegt, der Glaskörper trägt bei dieser Neuauflage den Schriftzug „**Sarsaparilla**“ anstelle der **Patentnummer** unten am Glaskörper.

Mit freundlichen Grüßen, Michael Szybalski



No. 285 -

Chromium Plated Electric Aeroplane Lamp. Made of gleaming **chromium plated metal** in the exact appearance of the **latest type streamlined airliner**. A frosted glass shade in **acid blue** color with striking silver stripes and decorations is mounted on top and made to represent the cabin body of the plane, with electric bulb concealed inside producing a marvellously attractive effect when lighted. Has push type switch fitted in tail of ship and is supplied complete with regulation cord and plug. The lamp is 7 5/8 inches high and has a wingspread of 13 1/4 inches. [H 19,4 cm, B 33,6 cm]

Each \$ 2.15; Each (in lots of 6) \$ 2.00

No. 286 - Aeroplane Lamp. As above but with white frosted glass shade.

Each \$ 2.15; Each (in lots of 6) \$ 2.00

Abb. 2014-3/78-xx

Flugzeug als Lampenschirm, form-geblasenes, mattiertes Glas, Metallteile verchromt

Patentschrift R. A. Schober, June 21, 1938; Lamp; Filed Feb. 18, 1938; Des. 110,196; Inventor Ray A. Schober, by Att. [Attorney / Anwalt]; Gefunden von Szybalski

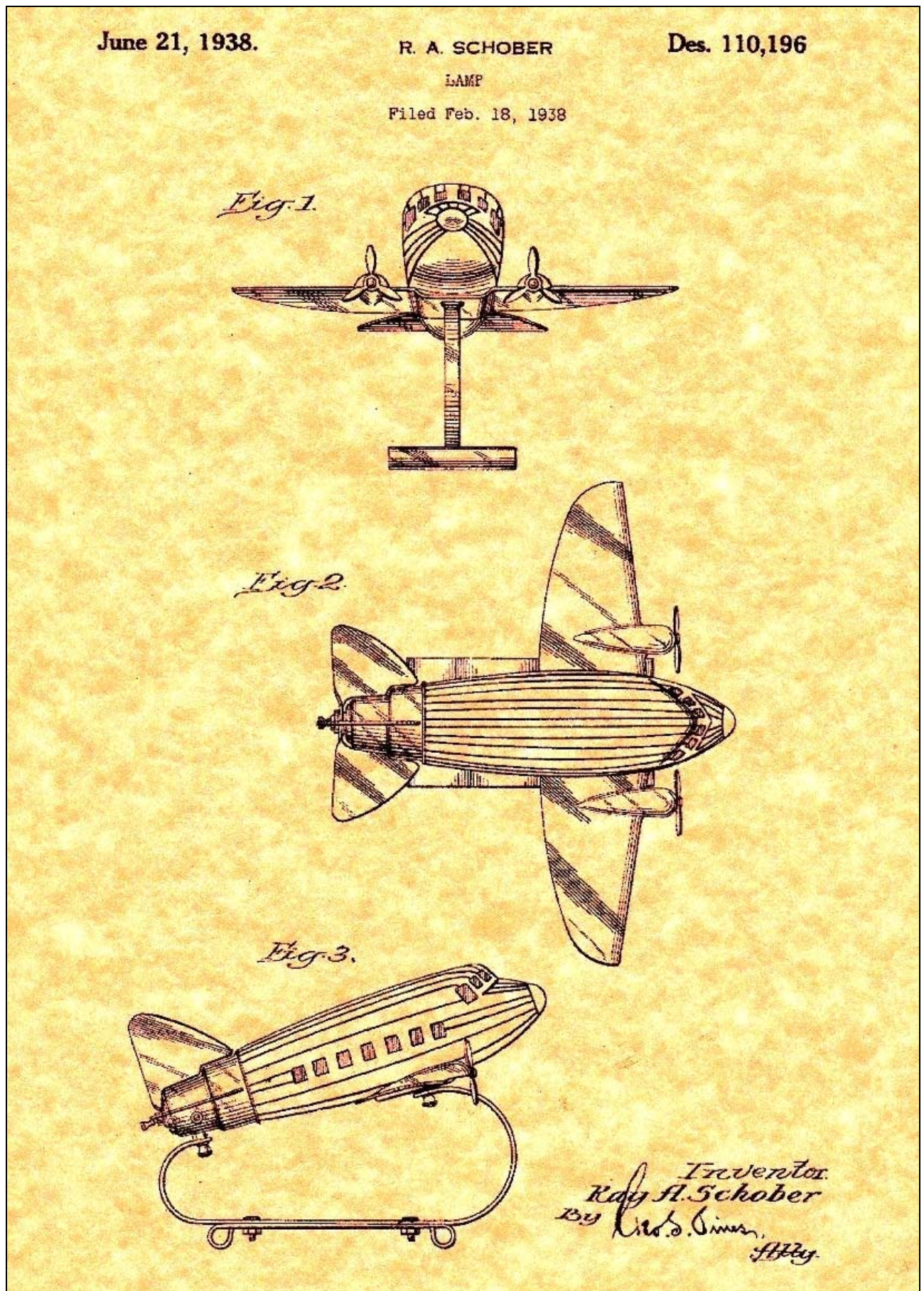


Abb. 2014-3/78-xx
 Flugzeug als Lampenschirm, form-geblasenes, mattiertes Glas, Metallteile verchromt
 Katalog, Gelman Bros., Minneapolis, Minn., Wholesale Premium Merchandise & Novelties, S. 65
 No. 285 - Chromium Plated Electric Aeroplane Lamp; Gefunden von Szybalski

65

GELLMAN BROS. MINNEAPOLIS, MINN.

Novelty Aeroplane, Table and Boudoir Electric Lamps



No. 325—Modern Electric Table Lamp. All metal fancy design base in assorted bronze and chrome and ivory finishes with matching cellophane wrapped shades of parchmentized paper in pleated style with handsomely colored decorative designs. An exceptionally attractive lamp at an extremely low price. Height, 17½ inches. Complete with push-type switch socket, cord and plug.

Each.....**85¢**
 Per dozen.....**\$9.50**



No. 321—Decorative Electric Table Lamp. Handsomely made metal base in assorted bronze and ivory finishes with polished nickel trim. Matching cellophane wrapped shades of parchmentized paper with appealing and colorful fancy design decorations. An exceptional value! Complete with push-type switch socket, cord and plug. Height, 15 inches.

Each.....**65¢**
 Per dozen.....**\$7.20**



No. 331—Modernistic Electric Table Lamp. Beautifully designed all-metal base in assorted bronze and ivory finishes with chrome trim and fittings. Supplied with cellophane wrapped matching shades in pleated style with harmonious woven cord decorative edging. An excellent selling number! Complete with push-type switch socket, regulation cord and plug. Height, 18½ inches.

Each.....**\$1.10**
 Per dozen.....**\$12.50**



No. 281—Electric Table Lamp. Distinctively designed metal base in combination ivory and black colors with fancy standard of chromium plated metal, and smart ivory color parchmentized paper shade decorated in silver and black colors. Complete with push-type switch socket, regulation cord and plug. An exceptional value. Height, 14½ inches.

Each.....**50¢**
 Per dozen.....**\$5.50**



No. 285—Chromium Plated Electric Aeroplane Lamp. Made of gleaming chromium plated metal in the exact appearance of the latest type streamlined airliner. A frosted glass shade in acid blue color with striking silver stripes and decorations is mounted on top and made to represent the cabin body of the plane, with electric bulb concealed inside producing a marvellously attractive effect when lighted. Has push type switch fitted in tail of ship and is supplied complete with regulation cord and plug. The lamp is 7¾ inches high and has a wingspread of 13¾ inches.

Each.....**\$2.15**
 Each (in lots of 6).....**\$2.00**

No. 286—Aeroplane Lamp. As above but with white frosted glass shade.

Each.....**\$2.15**
 Each (in lots of 6).....**\$2.00**



No. 253—Modernistic Console Lamp. A strikingly new design made of glass in assorted white opal, rose and green colors. Highly polished nickel metal parts with pull chain switch. Top is attractively decorated with black panel designs as illustrated. Height, 11½ inches. Complete with regulation cord and plug.

Each.....**80¢**
 Per dozen.....**\$9.00**

WHOLESALE PREMIUM MERCHANDISE & NOVELTIES

Abb. 2014-3/78-xx
 Flugzeug als Lampenschirm, form-geblasenes, mattiertes Glas, Metallteile verchromt
 Katalog, Novelty Lamps in a Variety of Styles, S. 607
No. 2C71 - Aeroplane Novelty Lamp; Gefunden von Szybalski

Novelty Lamps in a Variety of Styles (Bulbs not Included)

Balancing Seal Radio Lamp. Made of heavy cast metal in bronze finish with ruby color glass shade. Height overall 14½ inches. Packed each in a carton.

No. 2C140.
 Per dozen..... 13.50
 Each 1.25



"Spirit of America" Radio Lamp. Heavy cast metal base and pillar surmounted by spread eagle stands 10½ inches overall. Bright Ruby glass shade. Metal parts finished in bronze. Packed each in a carton.

No. 2C139. Per dozen..... 13.50
 Each 1.25



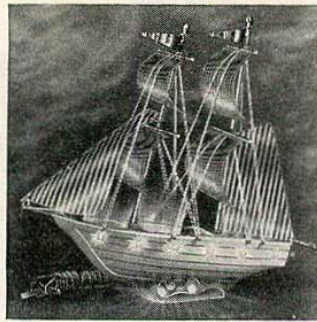
Novel Radio, Occasional, or Night Lamp. Heavy frosted glass shade in shape of horse head has crystal clear mane, eyes, and nostrils for contrast. Mounted on beautiful hand rubbed wood base which has turn-knob switch. Regular base socket. Unusual effects result by use of colored bulbs. Size overall 7x6¼x4 inches. Packed each in carton.

No. 2C166. Per dozen..... 10.50
 Each90



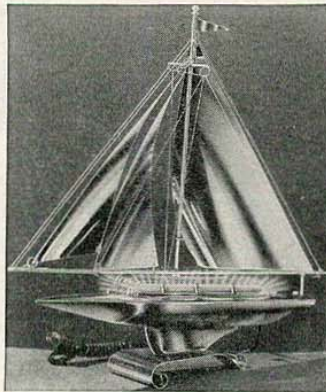
Crystal Horse Head Glow Lamp. Metal parts are plated antique gold finish. Overall height about 15½ inches. Comes complete with miniature bulb in base, switch, cord and plug. Packed each in a carton.

No. 2C163. Each.. 3.25
 In lots of 6 or more
 Each 3.00



Electric Ship Lamp. Decorative novelty lamp. Length about 13½ in., height about 12. in. Chrome sails with baked enamel metal hull, wave effect glass base. Light bulb illuminates base, port holes and throws reflection of various colors on sails. Wired with switch control, cord and plug. Complete with bulb. Ship set up ready for use. Each in carton.

No. 2C260. Each..... 2.50
 In lots of 6 or more. Each..... 2.40



Decorative Ship Lamp Model. Light glows through red translucent deck and reflects from chrome sails. Hull and all metal parts are white metal, in bright chrome finish. Complete with tubular bulb, rubber covered cord, and plug. Height 18½ inches. Length 19 inches. Packed each in carton.

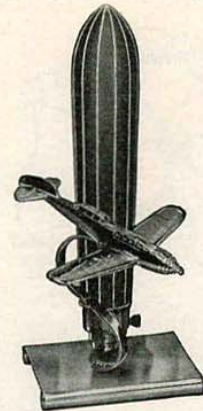
No. 2C161. Each..... 4.00
 In lots of 6 or more. Each..... 3.90



APPROVED
 I. E. S.
 TABLE LAMP
 BETTER LIGHT
 BETTER SIGHT

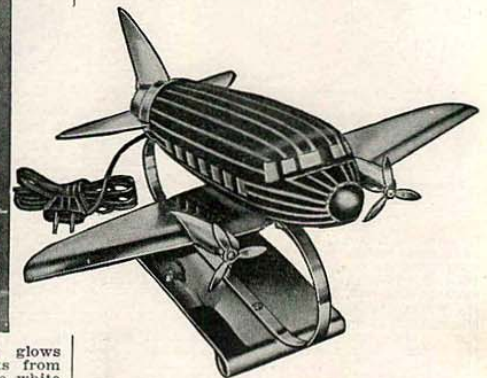
Genuine I. E. S. Table Lamp. With holo-phane prismatic glass reflector, giving extra amount of light. Height overall about 24 inches. Neatly designed cast metal base in lovely Antique Ivory finish. Complete with heavy vellum parchment shade, hand antiqued, soft Ivory color, with white lining for extra reflection.

No. 2C236. Each. 4.00



Dive Bomber Novelty Lamp. Glass torpedo is etched in blue, with decorative silver color lines. Light glows on silver plated bombing plane (9-inch wing spread) and reflects off chrome base. Height 14 inches. Packed each in a carton.

No. 2C162. Each..... 2.25
 In lots of 6 or more. Each..... 2.15



Aeroplane Novelty Lamp. Frosted blue glass, outlined with silver striping to harmonize with chrome plated metal parts. Dimensions overall: Width 13 inches, length 11½ inches, height 7½ inches. Wired with turn-knob switch in tail, cord and plug, complete with bulb. Each in a carton.

No. 2C71. Each..... 2.60



Ship Lamp. Size about 16½ inches high and 17 inches long. Deck is so constructed that when lamp is lit a myriad of magnificent colors shoots upward and reflects on the highly polished chrome-plated sails. Hull of heavy acid-etched glass, in Swedish modern finish. Sails and all other metal parts are chrome plated, rigging silver finish wire. Complete with bulb, 6 feet of cord and switch. Ship set up ready for use. Packed each in a carton.

No. 2C259. Each..... 4.00
 In lots of 6. Each..... 3.90



Abb. 2014-3/78-xx
 Flugzeug als Lampenschirm, form-geblasenes, mattiertes Glas, Metallteile verchromt
 Katalog, Values Service, World's Largest Novelty House N. Shure Co., Chicago, S. 905
No. 2C71 - Aeroplane Novelty Lamp; Gefunden von Szybalski

VALUES WORLD'S LARGEST NOVELTY HOUSE SERVICE

N. SHURE CO. CHICAGO

905

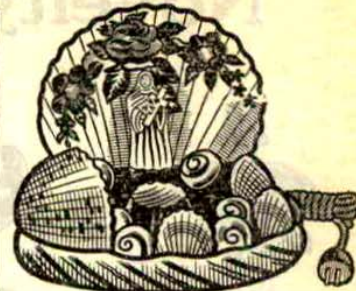
Novelty Lamps That Are Sure To Please



Decorated Shell Electric Lamp. Fancy shape shell back and shell trimming. Has decorated bisc figure set in shell. Hand painted base. Wired with cord and plug, complete with bulb. Height about 5 inches, width of base 7 inches. **No. 2C202.** Per dozen..... 6.00



Religious Shell Lamp. Scalloped fan shape shell, with hand decorated floral design in bright colors. Religious figure set on decorated base, trimmed with iridescent pearl shells. Size about 5 in. high, width of base 6 3/4 in. **No. 2C203.** Per dozen..... 6.00



Religious Shell Lamp. Scalloped fan shape shell with hand painted floral design. Religious figure set on decorated base. Trimmed with shells. Size about 6 inches high, width of base 7 3/4 inches. Wired with cord and plug, complete with bulb. **No. 2C206.** Per dozen..... 8.50



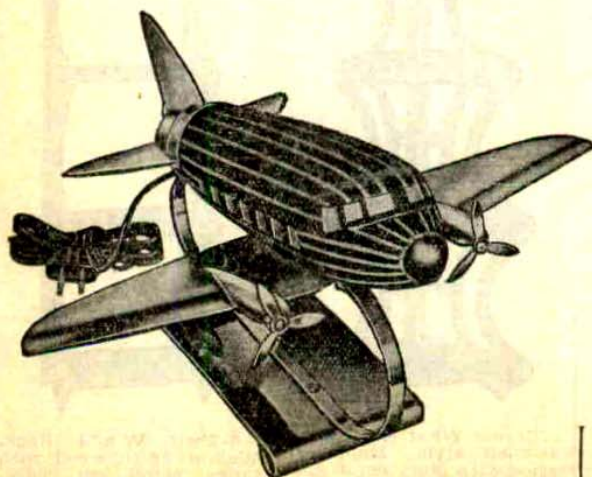
Religious Panel Electric Lamp. Height about 8 1/4 inches. Cast metal base, gold bronze finish, wired with switch control, miniature socket complete with bulb. Crystal glass panel with frosted design of Christ. When illuminated light reflects on the panel. Each in carton. **No. 2C61.** Per dozen..... 12.00
 Each 1.10



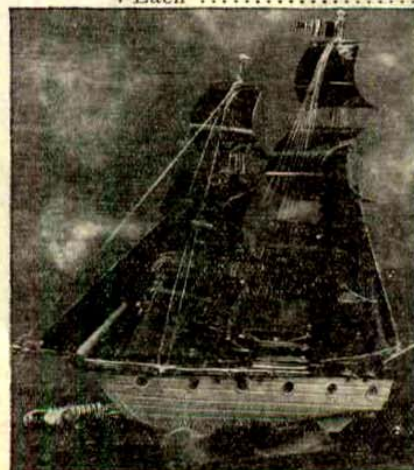
Decorated Shell Electric Lamp. Hand painted scenic design. Has decorated bisc figure of small fisherboy. Hand painted base, trimmed with shells. Wired with cord and plug, complete with bulb. Size, height about 6 1/4 inches, width of base 8 inches. **No. 2C203.** Per dozen..... 8.50



Religious Panel Lamp. Height about 8 1/4 inches. Cast metal base, gold bronze finish, wired with switch control, miniature socket complete with bulb. Crystal glass panel with frosted design of Madonna. When illuminated light reflects on panel. Each in carton. **No. 2C62.** Per dozen..... 12.00
 Each 1.10



Aeroplane Novelty Lamp. Frosted blue glass, outlined with silver striping to harmonize with chrome plated metal parts. Dimensions overall: Width 13 inches, length 11 1/2 inches, height 7 1/4 inches. Wired with turn-knob switch in tail, cord and plug, complete with bulb. Each in a carton. **No. 2C71.** Each..... 2.00



Ship Lamp. Size about 16 1/2 inches high and 17 inches long. Deck is so constructed that when lamp is lit a myriad of magnificent colors shoots upward and reflects on the highly polished chrome-plated sails. Hull of heavy acid-etched glass, in Swedish modern finish. Sails and all other metal parts are chrome plated, rigging silver finish wire. Complete with bulb, 6 feet of cord and switch. Ship set up ready for use. Packed each in carton. **No. 2C259.** Each..... 3.85
 In lots of 6. Each..... 3.75

Abb. 2014-3/78-xx
Flugzeug als Lampenschirm, form-geblasenes, mattiertes Glas, Metallteile verchromt,
L 34 cm, B vorne 34 cm, hinten 15 cm, H vorne 21 cm, hinten 13 cm
Sammlung Menay
Hersteller unbekannt, Deutschland, 1930-er Jahre? / **nicht Deutschland, USA 1938!!!**





SG: Es ist nicht einfach, das Flugzeug zu finden, das 1938 in den USA als „latest type streamlined airliner“ Vorbild für die Lampe war, von Lockheed gibt es einige Modelle ab 1937 /1938, z.B. Lockheed 14 Super Electra, Lockheed A 29 Hudson oder Lockheed Model 18-56 Lodestar das Vorbild des 2-motorigen Flugzeugs könnte auch Boeing 247 oder Douglas DC-3 gewesen sein ...
 der Hersteller der Lampe ist unbekannt ...

Das Virtuelle Luftfahrtmuseum
 europäische Luftfahrtgeschichte im Internet
 www.luftfahrtmuseum.com

Verkauf von Archivmaterial
 Abgabe überzähliger Zeitschriften, Bücher, etc. aus dem Archiv
 http://archiv.luftfahrtmuseum.com

Typenblatt: a29
Lockheed A 29 Hudson
 Seeaufklärer und U-Bootjäger, USA, 1938
 [Technische Daten] [Exponate/Bilder] - [Lockheed] [Kampfflugzeuge 1919-1938] [U-Boot-Jäger 1919-1938]

Typenblatt: lode
Lockheed Model 18-56 Lodestar
 Passagierflugzeug / Transporter, USA, 1936
 [Technische Daten] [Exponate/Bilder] - [Lockheed] [Passagierflugzeuge 1919-1938]

1938 Hervorheben Groß-/Kleinschreibung 15 von 23 Übereinstimmungen

Siehe auch WEB PK - suchen auf www.pressglas-korrespondenz.de mit GOOGLE Lokal →

- www.pressglas-korrespondenz.de/aktuelles/pdf/pk-2012-3w-menay-halama-vase-erdteile.pdf
- www.pressglas-korrespondenz.de/aktuelles/pdf/pk-2012-3w-menay-riedel-hand-tulpe.pdf
- www.pressglas-korrespondenz.de/aktuelles/pdf/pk-2012-4w-menay-riedel-hand-tulpe.pdf
- www.pressglas-korrespondenz.de/aktuelles/pdf/pk-2013-1w-menay-stoelzle-slag-gruen.pdf
- www.pressglas-korrespondenz.de/aktuelles/pdf/pk-2014-1w-menay-schlevogt-mauder-1939.pdf
- www.pressglas-korrespondenz.de/aktuelles/pdf/pk-2014-1w-menay-reich-vase-1934.pdf
- www.pressglas-korrespondenz.de/aktuelles/pdf/pk-2014-1w-menay-halama-karaffe-1939.pdf
- www.pressglas-korrespondenz.de/aktuelles/pdf/pk-2014-1w-menay-stoelzle-bierhumpen-1920.pdf
- www.pressglas-korrespondenz.de/aktuelles/pdf/pk-2014-3w-menay-loewe-unbekannt-1900.pdf
- www.pressglas-korrespondenz.de/aktuelles/pdf/pk-2014-3w-menay-bierglas-ziegenbock-1900.pdf
- www.pressglas-korrespondenz.de/aktuelles/pdf/pk-2014-3w-menay-lampe-flugzeug-1930.pdf

