



Abb. 2015-2/02-01
 Marigold-irisierte Schale mit Pfauen und Weintrauben, H 7 cm, D 22 cm, Rand gefaltet
 Sammlung Reith
 Fenton, USA, „Peacock & Grapes“, ab 1910

Vera Reith, SG

Mai 2015

Marigold-farbene Schale mit Pfauen und Weintrauben, Fenton, USA, ab 1910

Vera Reith, Hallo Herr Geiselberger,

ich möchte Ihnen meinen neuesten Fund vorstellen, es handelt sich um eine Schale von **Fenton** aus **Carnival-Glas**. Nach einem ersten flüchtigen Blick auf diese Schale wollte ich weitergehen, als mir der Händler nachrief: „C'est vieux, Madame!“ Also sah ich sie mir noch einmal genauer an. Und während ich so überlegte, ob sie überhaupt in meine Sammlung passen würde, ging der Händler immer weiter mit dem Preis runter, bis ich schließlich nicht mehr nein sagen konnte.

Die Schale (D 22 cm, H 7 cm, G 545 g) ist aus einem schön **irisierendem und changierendem Marigold**. **Fenton**, gegründet **1905**, war wohl **eine der ersten Firmen**, die ab **1907** die Technik des Irisierens von **Tiffany** übernommen hat, andere folgten (s. **PK 1999-4**, S. 64 ff.). Meine Schale habe ich in einem Buch abgebildet gefunden. Dort wird sie als **Fenton**, „**Peacock & Grapes**“, um **1910** bezeichnet. Das wird wohl stimmen, da neuere Reproduktionen von Fenton immer gemarkt wurden, meine Schale aber **ungemarkt** ist. Was das

Stück in meiner Sammlung einzigartig macht, ist nicht nur die Farbe, sondern die Tatsache, dass es auf **beiden Seiten ein Muster** hat! Innen sieht man in den Feldern abwechselnd einen **Pfau** und eine **Weintraube**, außen **Blätter** und mir unbekannte **Früchte** (Nüsse?). Von europäischen Stücken ist mir diese Art der Dekoration nicht bekannt, oder sie hat sich hierzulande nicht durchgesetzt?

Herzliche Grüße, Vera Reith

SG: Hallo Frau Reith,
 Sie haben sicher recht mit **Fenton**, Sie können ja mal bei **Thistlewoods** nachschauen
www.thistlewoods.net/
www.carnivalglassworldwide.com/
 oder bei **Doty**
www.ddoty.com/
 ich muss erst noch die CD PK 2015-1 machen ...



Abb. 2015-2/02-02
Marigold-irisierte Schale mit Pfauen und Weintrauben, H 7 cm, D 22 cm, Rand gefaltet
Sammlung Reith
Fenton, USA, „Peacock & Grapes“, ab 1910



Abb. 2015-2/02-03
Marigold-irisierte Schale mit Pfauen und Weintrauben, H 7 cm, D 22 cm, Rand gefaltet
Sammlung Reith
Fenton, USA, „Peacock & Grapes“, ab 1910



Abb. 2015-2/02-04
www.ddoty.com (2015-05)

David Doty's Carnival Glass Website - Mozilla Firefox
www.ddoty.com

THE FIELD GUIDE TO CARNIVAL GLASS

Note: I do not provide individual identification or pricing. Nor will I make judgments on color or damage.

New Printed Field Guide Now Available



Indexed by Pattern
More than 1100 patterns

Indexed by Shape

Indexed by Motif

Indexed by Maker

General information

- Links to other sites
- Illustrated Glossary
Lots of photos here, so it may take a while to load
- New to Carnival?
- A Brief History of Carnival
- Carnival Glass Books
- Comments by Alan and Lorraine Pickup
Articles from the Heart of America Carnival Glass Association Bulletin
- Price trends
(revised January 2014)
- How Carnival Glass was made
- Test your knowledge

Please note
This information is provided for the convenience of Carnival Glass collectors. I took the photos (unless noted otherwise) and they are copyrighted by me. Please do not use them for publication, either in print on the Web. The prices were compiled from a database of more than 170,000 auction sales over the

The new Field Guide book is now available. It is being distributed by the Heart of America Carnival Glass Association. For more information click here.

Special Features:

- Patterns recently added**
- Rarities and Whimsies**
- Photos from Readers**
Revised 2/14/2014
- Dugan Art Glass**
- Back Patterns**
Forty-two photographs of patterns that appear on the reverse of bowls, plates, and compotes.
- Internet Scams**
- Maker Marke**



What is Carnival Glass?
This is a question that confuses many people new to Carnival. Primarily, Carnival Glass is pressed glass that has an iridescent coating applied. **Remember, if it isn't iridescent, it isn't Carnival.**

Pressed glass? This is glass that has been formed by pressing into a mold while in a hot molten form. As it takes on the shape and detail of the mold. Once removed from the mold, and while still relatively hot, it is sprayed with salts in liquid form which gives it the "oil-on-water" multi-colored appearance.

Carnival Glass was first produced by Fenton in 1907 and made continuously until 2011. There were 5 or 6 major makers of it originally, but Fenton lasted longer than any of the others.

There are about 2,000 different patterns in Carnival Glass, many of which are similar, leading to much confusion. This site covers most of the known patterns but there are also many obscure patterns that I don't cover.

Alphabetical quick find: **A B C D E F G H I-J-K L M N O P-Q R S T-U-V W Z**

Fenton Hervorheben Groß-/Kleinschreibung 1 von 10 Übereinstimmungen Das Seitenende wurde erreicht, Suche vom Seitenanfang fortgesetzt



Abb. 2015-2/02-05

www.ddoty.com/makers.html (2015-05)

The Field Guide To Carnival Glass

Home **A B C D E F G H I-J-K L M N O P-Q R S T-U-V W Z**
 Vases Lettered Decorated Tumblers Contemporary
 Lighting (candleholders, lamps, shades)

Index to Classic Carnival Glass Patterns by U.S. Makers
 > Carnival Glass made by non-US makers <

<p>Cambridge Cambridge Cologne Buzz Saw cruets Double Star Hobstar, Cambridge Inverted Feather Inverted Strawberry Inverted Thistle Near Cut Sweetheart Venetian Wheat Sheaf</p> <p>Dugan/Diamond Adam's Rib Amaryllis Apple Blossoms Apple Blossom Twigs Apple and Pear Beaded Basket Beaded Panels Beaded Shell Beauty Bud vase Bellflower Bells and Beads Big Basketweave Border Plants Brooklyn Bridge Butterfly and Tulip Caroline Cherries Cherries, Paneled Cherry Wreath Christmas Compote Circle Scroll Coin Spot, Dugan Constellation Cosmos Variant Dahlia Dahlia, decorated Daisy Dear Daisy and Lattice Daisy Web Dogwood Sprays Double Stem Rose Elks Fan Fanciful Farmyard</p>	<p>Fenton Absentee Lotus and Grape Acorn Apple Tree April Showers Autumn Acorns Basketweave Open Edge Beaded Stars Birds and Cherries Birmingham Age Herald Blackberry Blackberry Banded Blueberry Blackberry Block Blackberry Bramble Blackberry Open Edge Blackberry Spray Blackberry, Wild Boggy Bayou vases Bouquet John H. Brand (lettered) Brazier's Candies (lettered) Briar Patch Bullseye and Beads</p> <p>Butterfly and Berry • Bowls • Hatpin holders • Vases • Water and table sets • Whimsies</p> <p>Butterfly and Fern Butterfly and Plume Butterflies bonbons Butterfly ornament Captive Rose Central Shoe Store (lettered) Cherries, Cherry Chain Cherry Circles bonbons Chrysanthemum Coin Dot, Fenton Compote Vase Concord (Concord Grape)</p>	<p>Fostoria American Brocaded Acorns Brocaded Palms Brocaded Poppy Brocaded Summer Gardens Chain and Star Long Buttress Sydney</p> <p>Hazel Atlas Diamond Point Columns</p> <p>Heisey Wigwam</p> <p>Higbee Diamond Fountain cruet</p> <p>Imperial Acanthus Balloons vases Banded Fleur de Lis Beaded Acanthus Beaded Bullseye Bellaire Good Will Tour Blaze Brocaded Daffodils Broken Arches Cape Cod Chatelaine Chesterfield Chrysanthemum Cobblestones Colonial Colonial Lady Columbia Cone and Tie tumbler Corn bottle Crabclaw Crackle Crucifix candlestick Daisy Diamond Block Diamond Lace Diamond Ring Diamond and Sunburst Double Dutch</p>	<p>Millersburg Acorn compotes Acorn vases Bernheimer (lettered) Big Fish Big Thistle Blackberry Bark vase Blackberry Wreath Boutonniere Bullseye and Loop vases Butterfly and Corn vase Campbell and Beesley (lettered) Cherries Cleveland Memorial Ashtray Cosmos Country Kitchen Courthouse (lettered) Deep Grape compotes Diamonds Dolphins compotes Elks Feather and Heart Fleur de Lis Flute Flowering Vine Gay Nineties Grape Leaves Grape Wreath Greengard Furniture Hanging Cherries Hobnail Hobnail Swirl Hobstar and Feather Holly Honeycomb and Hobstar vase Isaac Benesch & Sons (lettered) Leaf and Little Flowers Little Stars Many Stars Marilyn Mayan bowls Millersburg Strawberry Mitered Ovals vases Morning Glory Multi-Fruits and Flowers</p>	<p>Northwood Acorn Burrs Apple and Pear Intaglio Ballard (lettered) Barbella Basket of Roses Beaded Cable Blackberry Blackberry and Rays Blossom and Palms Blossomtime compotes Broecker's Flour (lettered) Bullseye and Leaves Bushel Basket Butterfly, Northwood Cherry and Cable Colonial (Double Loop) Concave Diamonds Corn vases Daisy and Drape vases Daisy and Plume Dandelion Davidson's Society Chocolates Diamond Point baskets Diamond Point vases Daisy and Plume Double Loop Drapery Dreibus Parfait Sweets E.A. Hudson Furniture Eagle Furniture Elegance Embroidered Mums Enameled Apple Blossoms Enameled Cherries Enameled Daisy and Little Flowers Feathers vase Fern, Northwood Fern Brand Chocolates Fine Cut and Roses Fine Rib vases Fine Rib, footed vases Flute Four Pillars vases Fruits and Flowers</p>
---	---	--	--	---

Fenton Hervorheben Groß-/Kleinschreibung 1 von 10 Übereinstimmungen Das Seitenende wurde erreicht, Suche vom Seitenanfang fortgesetzt



Abb. 2015-2/02-06
www.ddoty.com/peacockgrape.html (2015-05)

Peacock and Grape - Mozilla Firefox

www.ddoty.com/peacockgrape.html

The Field Guide To Carnival Glass


Home [A](#) [B](#) [C](#) [D](#) [E](#) [F](#) [G](#) [H](#) [I](#) [J](#) [K](#) [L](#) [M](#) [N](#) [O](#) [P](#) [Q](#) [R](#) [S](#) [T](#) [U](#) [V](#) [W](#) [Z](#)


Search

Vases Lettered Decorated Tumblers Contemporary

Lighting (candleholders, lamps, shades)

Peacock and Grape, Fenton Updated 1/21/2015





One of Fenton's most collectible patterns, Peacock and Grape is found in bowls and plates in many colors, both spatula footed and collar based. At left is a blue plate; above are a blue footed bowl in ice cream shape and a red ruffled bowl with a collar base. With bowls, the shape and type of foot make little difference in value.

Plates, 9 inches

Amethyst, 800 (2002), 115, 225 (both 2006), 195 (2012)

Blue, spatula footed, 120, 275 (both 2006), 175 (2008), 285 (2012)

Blue, collar base, 220, 375, 400 (all 2010), 350 (2013)

Blue, collar, electric, 3,350 (2004)

Green, collar base, 475, 625, 1,600 (all 2006), 625 (2010), 1,800 (2011)

Green, spatula footed, 200, 275 (both 2007), 180 (2008), 85, 175, 550 (all 2012)

Lavender, collar base, 2,800 (2001)

Marigold, 160, 190, 225, 325, 425 (all 2013), 40, 65, 275 (all 2014)

Marigold, spectacular, 900, 1,500 (both 2011), 1,700 (2012), 1,700 (2013), 3,100 (2014)

Marigold, scalloped whimsey, 1,150 (1998)

Teal, footed, 350 (2001), 260 (2004), 120 (2005), 1,400 (2006)

Nut bowl shape, deep, ruffled or round

Bowls, 8-9 inches, ruffled, 3/1, or ice cream shape

Amberina, 325, 525 (both 2008), 350 (2009)

Amethyst, 40-70

Aqua opal, 8,000 (2007)

Blue, 50-80

Blue, electric, 275 (2004), 250 (2008)

Blue, powder, 35 (2012), 55 (2013), 25, 35 (both 2014)

Green, 40-80

Green, emerald, 450 (2006), 300 (2009)

Ice blue, 125 (2010)

Ice green opal, 265 (1995), 275 (2000)

Lavender, 200 (2007), 30 (2011), 50 (2014)

Lime green, 85 (2009), 35 (2011), 45, 85, 90 (all 2013)

Lime green opal, 240 (2011), 275 (2012), 175, 300, 310 (all 2013), 150, 225 (both 2014)

Marigold, 25-45

Marigold, crimped edge, 500 (2009)

Marigold/moonstone, 400 (2007), 225 (2008),



Abb. 2015-2/02-07
www.thistlewoods.net/Fenton.Gallery.html (2015-05)

thistlewoods.net Carnival Glass - Fenton Gallery - Mozilla Firefox
www.thistlewoods.net/Fenton-Gallery.html

Thistlewoods' Website

Home | News | Articles | Items For Sale | Publications | Webstore | Search/Index | Email us | Links

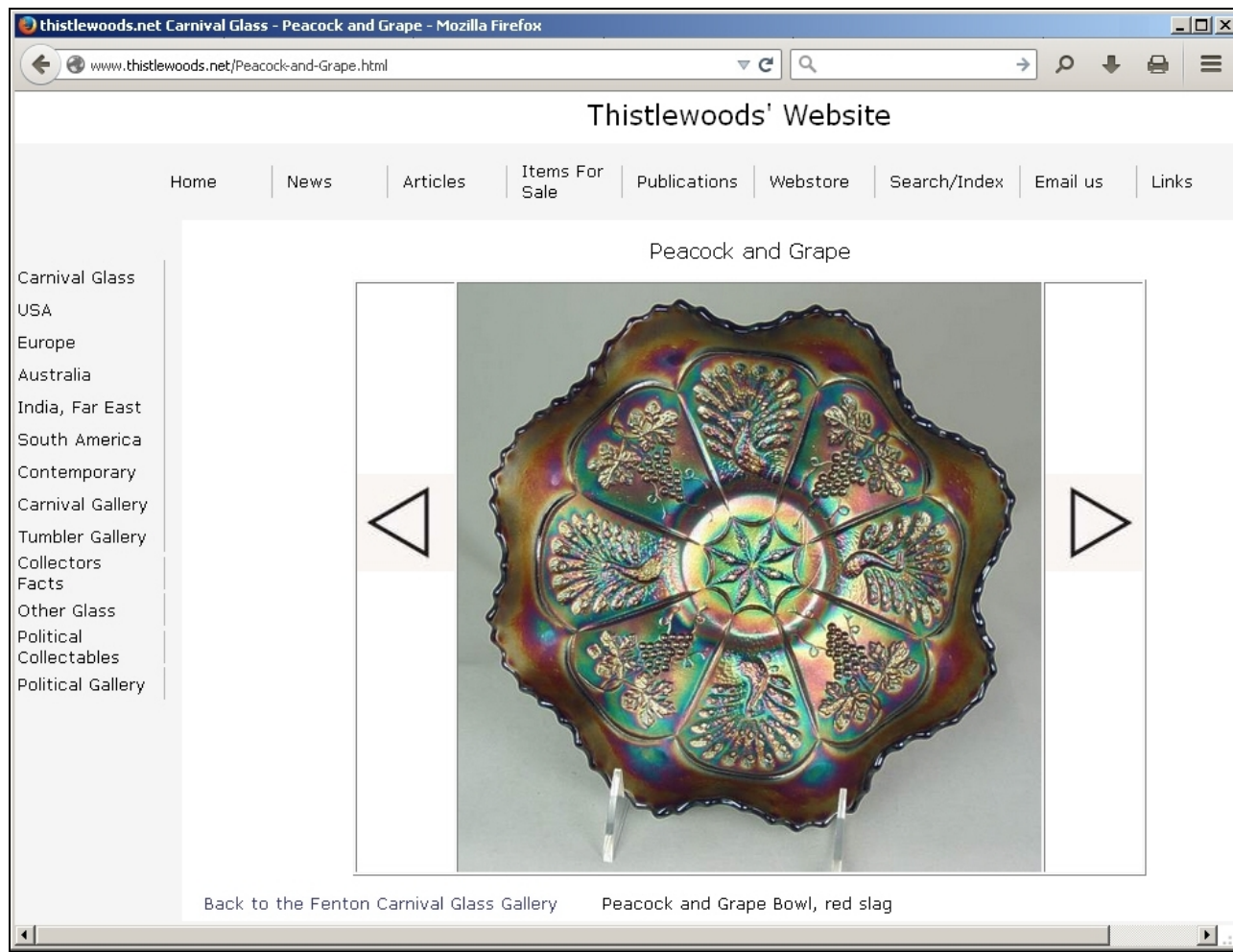
Fenton Carnival Glass Gallery

Click on any thumbnail image for a larger picture or browse through the gallery, picture by picture, starting

Autum Acorns	Banded Drape (Forget-Me-Not)	Banded Drape (Enamelled Iris)	Butterfly and Berry	Cherry Chain
Dragon and Lotus	Dragon and Lotus	Dragon and Strawberry	Fentonia	Fentonia
Grape and Cable	Heart and Vine	Holly	Holly	Horse Medallion
Leaf Chain	Leaf Tiers	Lotus and Poinsettia	Magnolia and Drape	Nine-Sixteen



Abb. 2015-2/02-08
www.thistlewoods.net/Peacock and Grape.html (2015-05)



Siehe unter anderem auch:

WEB PK - in allen Web-Artikeln gibt es umfangreiche Hinweise auf weitere Artikel zum Thema: suchen auf www.pressglas-korrespondenz.de mit GOOGLE Lokal →

- www.pressglas-korrespondenz.de/aktuelles/pdf/pk-1999-4w-sg-brockwitz.pdf (carnival glass)
- www.pressglas-korrespondenz.de/aktuelles/pdf/pk-1999-4w-sg-carnival-glass.pdf
- www.pressglas-korrespondenz.de/aktuelles/pdf/thistlewood-iris-carnival.pdf PK 2003-3
- www.pressglas-korrespondenz.de/aktuelles/pdf/pk-2006-2w-thistlewood-walther-carnival.pdf
- www.pressglas-korrespondenz.de/aktuelles/pdf/pk-2006-2w-mauerhoff-walther-uhr.pdf
- www.pressglas-korrespondenz.de/aktuelles/pdf/pk-2006-2w-weihs-vase-pebbles-fan.pdf
- www.pressglas-korrespondenz.de/aktuelles/pdf/pk-2007-1w-thistle-hortensja-carnival.pdf
- www.pressglas-korrespondenz.de/aktuelles/pdf/pk-2007-1w-thistle-zabkowice-carnival.pdf
- www.pressglas-korrespondenz.de/aktuelles/pdf/pk-2007-3w-nicol-fenton.pdf
- www.pressglas-korrespondenz.de/aktuelles/pdf/pk-2007-3w-sadler-schale-carnival-brockwitz-.pdf
- www.pressglas-korrespondenz.de/aktuelles/pdf/pk-2010-2w-smith-wright-glocke.pdf
- www.pressglas-korrespondenz.de/aktuelles/pdf/pk-2014-2w-cooper-figural-flower-bowls-2014.pdf
- www.pressglas-korrespondenz.de/aktuelles/pdf/pk-2015-2w-reith-fenton-schale-pfau-traube.pdf

□