



Abb. 2015-3/56-01 und Abb. 2015-3/56-02

Vase mit drei Gesichtern: Frau, Mann und Kind, farbloses Pressglas, teilweise mattiert, H 18,8 cm, D 15 cm

Vase mit drei Gesichtern: Frau, Mann und Kind, bernstein-farbenes Pressglas, teilweise mattiert, H 17,9 cm, D 17 cm

Sammlung Hans, Niederlande

s. MB Walther 1934, Tafel 86, Vasen, Nr. 42950, Relief, Höhe 18 cm

Hans, SG

November 2015

## Zwei Vasen „Relief“ mit 3 Gesichtern, farblos und bernstein-farben, mattiert Sächs. Glasfabrik Walther & Söhne AG, Ottendorf-Okrilla & Radeberg, 1934

Goodday Herr Geiselberger,

If you have time to answer a question.

Its about a **Walther** vase „**Relief**“ (3 faces).

Do you know if they made these in **different sizes**?

I got 2 and they are **different in size (height and wide)**

can it be a **different lot** or so?

the colourless measures **18,8 x 15 cm**

and the amber other one **17,9 x 17 cm**.

I like them both but I am just curious how this can be?

When did the company **stop** making these vases?

Sorry for the inconvenience, Kind regards, Hans

**SG:** Hello Hans,

please can you send pictures of your vases?

without pictures I cannot answer your question ...

best wishes, Siegmur Geiselberger

**SG:** Hello Hans,

this vase „**Relief**“ was made by **Walther 1934**,

look at **table 86, No. 42950, height 18 cm**,

maybe they made also a **second version** ...

in **1935 this vase was not more presented**

it was **certainly not produced after 1948** ...

if you will agree I would like to show your pictures in  
my magazine website ...

**The difference 18,8 x 15 and 17,9 x 17 cm**

**is not big enough for 2 different vases,**

maybe they were **cut at the rims** in different heights

or they were **widened differently** ...

When I compare your pictures it seems that the **rims**

**were cut** and then **fire-polished** for smooth edges.

The **raw rims** of such pressed vases had **different**

**heights** and then had to be **cut even**. But **before cutting**

I think they were at their **rims widened with a wooden**

**tool** [aufgeweitet]. So finally **their heights differed for**

**0,9 cm and their width for 2 cm!**

**This means that Walther made only one version!**

**You can not see that they were widened and cut**

**because they were then fire-polished und smoothed!**

**And it is logical that the amber vase was more wid-**

**ened as the colourless vase and therefore lost some**

**height!**

Hans: Gutemittag Herr Geiselberger,

I dont mind if you place the pictures at the magazine,

I'm glad you want to do it.

About the vases: **they were not cut**, its more like the

**amber** one looks if it was **pushed down during mak-**

**ing**. Like if you make a **vase of clay** and push a bit on  
top, its also wider on top.

But you have answered my questions, maybe just a  
**faulty lot** and I'm very happy with them ...

Thank you kindly, Best wishes, Hans

SG: Gutemittag Hans,

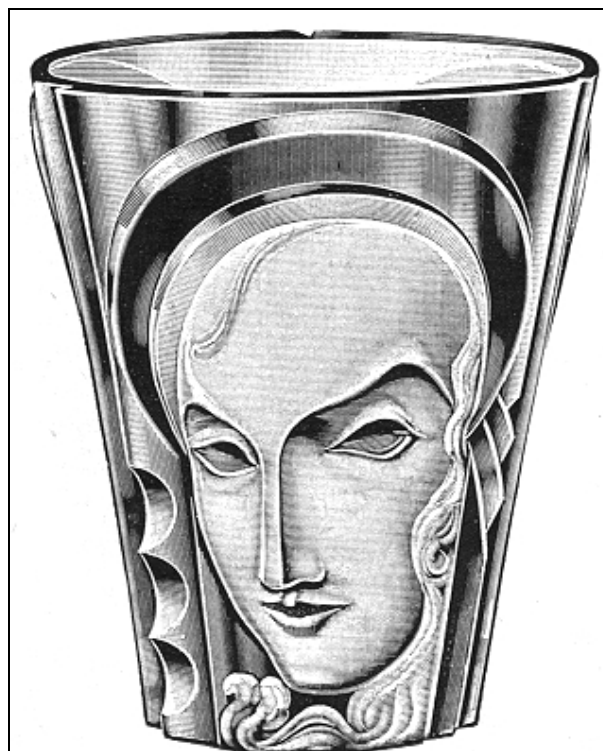
**this vase was not pushed down - but widened -  
the effect is the same!**

Abb. 2001-03/387 (Ausschnitt)

Musterbuch Walther 1934, Tafel 86, Vasen, Nr. 42950, Relief

Höhe 18 cm

MB Sammlung von Spaeth



Nr. 42950

**Vase „Relief“** Vase - Vase - Florero

Höhe 18 cm

Hauteur - Height - Altura

Nr. 21782b Ø 13 cm

**Einsatz hell zur Vase „Relief“**

Grille claire - Inset clear

Parte interior de vidrio claro para flores



Abb. 2015-3/56-03

Vase mit drei Gesichtern: Frau, Mann und Kind, farbloses Pressglas, teilweise mattiert, H 18,8 cm, D 15 cm

Sammlung Hans, Niederlande

s. MB Walther 1934, Tafel 86, Vasen, Nr. 42950, Relief, Höhe 18 cm



Abb. 2015-3/56-04

Vase mit drei Gesichtern: Frau, Mann und Kind, bernstein-farbenes Pressglas, teilweise mattiert, H 17,9 cm, D 17 cm

Sammlung Hans, Niederlande

s. MB Walther 1934, Tafel 86, Vasen, Nr. 42950, Relief, Höhe 18 cm



Siehe unter anderem auch:

**PK 2001-3** **Anhang 01, SG, MB Sächsische Glasfabrik August Walther & Söhne AG Ottendorf-Okrilla und Radeberg, 1934 (Auszug); Sammlung von Spaeth**

**PK 2002-3** **Anhang 01, SG, MB Sächsische Glasfabrik August Walther & Söhne AG, Ottendorf-Okrilla bei Dresden, 1935 (Auszug); Sammlung Mauerhoff**

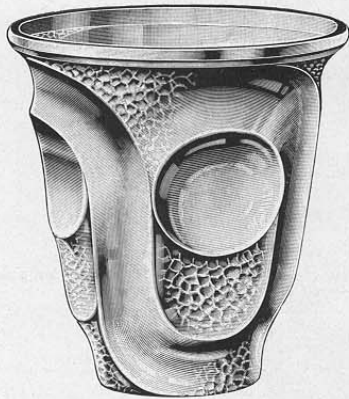


Abb. 2001-03/387; Musterbuch Walther 1934, Tafel 86, Vasen; Sammlung von Spaeth

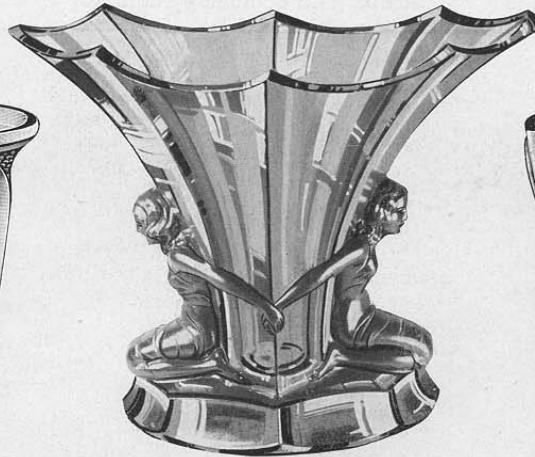
86

# Vasen

Vases - Vases - Floreros



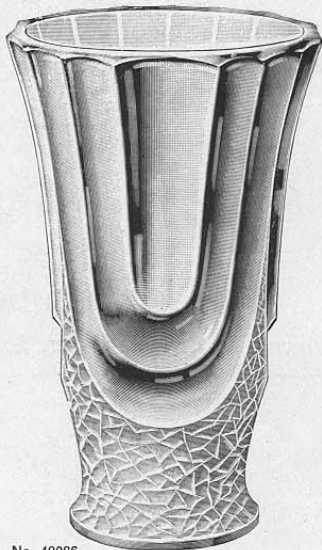
Nr. 42905  
**Vase „Atlas“** Vase - Vase - Florero  
Nr. 42905 ausgeschweift  
évasé - turned out - combado  
Höhe 17 cm Hauteur - Height - Altura  
Nr. 42906 eingezogen  
courbé bord rentrant - turned in  
encorvado hacia dentro  
Höhe 17 cm Hauteur - Height - Altura  
Nr. 21782b  $\varnothing$  13 cm  
Einsatz hell zur Vase „Atlas“  
Grille claire - Inset, clear  
Parte interior de vidrio claro para flores



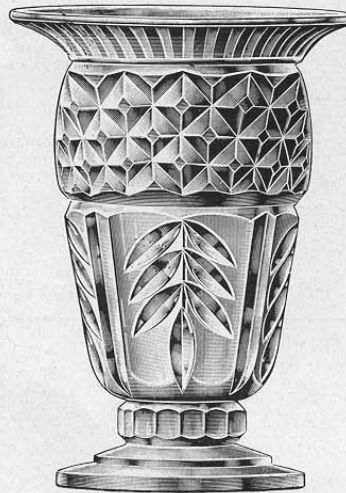
Nr. 44013  
**Vase „Windsor“** mit matten Figuren  
Vase avec statuettes mates - Vase with figures matted  
Florero con figuras mates  
Höhe 20 cm  
Hauteur - Height - Altura  
Nr. 44039  $11 \times 15$  cm  
Einsatz, oval, hell zur Vase „Windsor“  
Grille claire, ovale - Inset, oval, clear  
Parte interior de vidrio claro, ovalada para flores



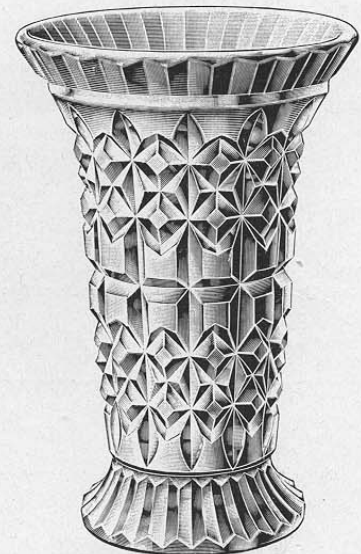
Nr. 42950  
**Vase „Relief“** Vase - Vase - Florero  
Höhe 18 cm  
Hauteur - Height - Altura  
Nr. 21782b  $\varnothing$  13 cm  
Einsatz hell zur Vase „Relief“  
Grille claire - Inset, clear  
Parte interior de vidrio claro para flores



Nr. 42986  
**Vase „Luxor“** Vase - Vase - Florero  
Höhe 24 cm Hauteur - Height - Altura  
oberer  $\varnothing$  17,5 cm - supérieur - at top - superior  
ohne Einsatz 15 cm - sans grille  
without inset - sin parte interior  
Nr. 21782 b  $\varnothing$  13 cm  
Einsatz hell zur Vase „Luxor“  
Grille claire - Inset, clear  
Parte interior de vidrio claro para flores



Nr. 44016  
**Vase „Carlos“** Vase - Vase - Florero  
Höhe 24 cm Hauteur - Height - Altura  
Nr. 44050  $\varnothing$  14 cm  
Einsatz hell zur Vase „Carlos“  
Grille claire - Inset, clear  
Parte interior de vidrio claro para flores



Nr. 44017  
**Vase „Caro“** Vase - Vase - Florero  
Höhe 26 cm Hauteur - Height - Altura  
Nr. 21782b  $\varnothing$  13 cm  
Einsatz hell zur Vase „Caro“  
Grille claire - Inset, clear  
Parte interior de vidrio claro para flores

Bei Aufträgen von weniger als 50 Stück pro Artikel, Größe und Farbe müssen wir uns Liefermöglichkeit jeweils vorbehalten.  
Pour commande de moins de 50 pièces par article, grandeur et couleur nous nous réservons la faculté d'accepter ou de refuser la livraison.  
In case smaller quantities than 50 pieces of any particular number, size and colour are ordered we reserve ourselves the right of acceptance of order.  
Caso de ser un pedido menos que 50 piezas por articulo, tamaño y color nos reservamos el derecho de entregarlos tal como nos será posible.

Siehe auch WEB PK - - suchen auf [www.pressglas-korrespondenz.de](http://www.pressglas-korrespondenz.de) mit GOOGLE Lokal →

[www.pressglas-korrespondenz.de/aktuelles/pdf/pk-2015-3w-hans-walther-vase-relief-1934.pdf](http://www.pressglas-korrespondenz.de/aktuelles/pdf/pk-2015-3w-hans-walther-vase-relief-1934.pdf)

[www.pressglas-korrespondenz.de/aktuelles/pdf/pk-2015-3w-sadler-walther-vase-relief-1934.pdf](http://www.pressglas-korrespondenz.de/aktuelles/pdf/pk-2015-3w-sadler-walther-vase-relief-1934.pdf) □